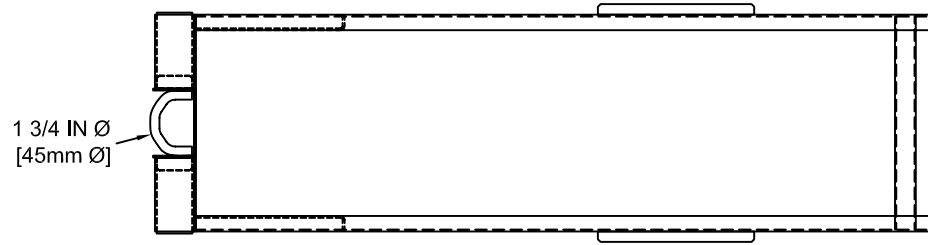
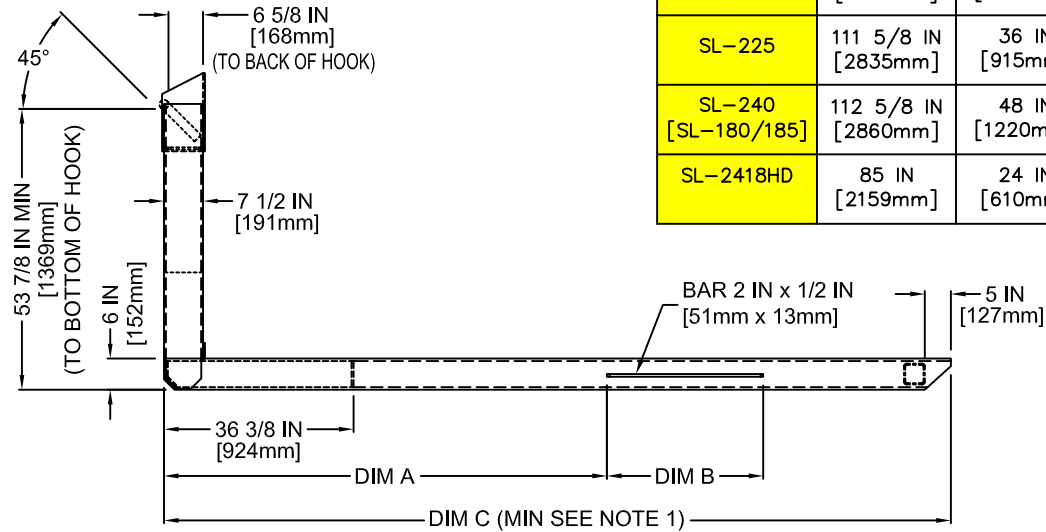
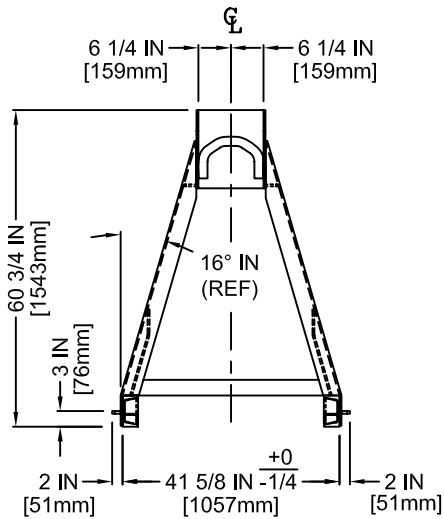


HOOK DETAIL



HOIST	DIM A	DIM B	DIM C
SL-205	123 5/8 IN [3140mm]	36 IN [915mm]	187 IN [4750mm]
SL-220	124 5/8 IN [3165mm]	48 IN [1220mm]	202 IN [5130mm]
SL-222	124 5/8 IN [3165mm]	48 IN [1220mm]	188 IN [4775mm]
SL-225	111 5/8 IN [2835mm]	36 IN [915mm]	163 IN [4140mm]
SL-240 [SL-180/185]	112 5/8 IN [2860mm]	48 IN [1220mm]	168 IN [4270mm]
SL-2418HD	85 IN [2159mm]	24 IN [610mm]	125 IN [3175mm]



NOTE:

THIS DRAWING PROVIDES THE CRITICAL SUBFRAME DIMENSIONS FOR COMPATIBILITY WITH THE SWAPLOADER HOOK LIFT HOIST. IT IS THE SUBFRAME SUPPLIER'S RESPONSIBILITY TO PROVIDE A SUBFRAME OF SUFFICIENT CAPACITY WHICH PROPERLY SUPPORTS THE BODY/CONTAINER WHEN USED WITH THE HOOK LIFT HOIST.

NOTE:

1. MIN LENGTH FOR JIB FULLY EXTENDED



200 SERIES SUBFRAME DIMENSIONS

(53-7/8" HOOK HEIGHT)

S-054 ~ REV H