

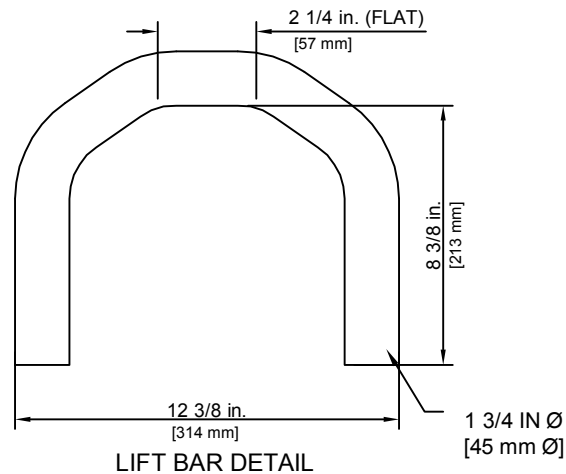
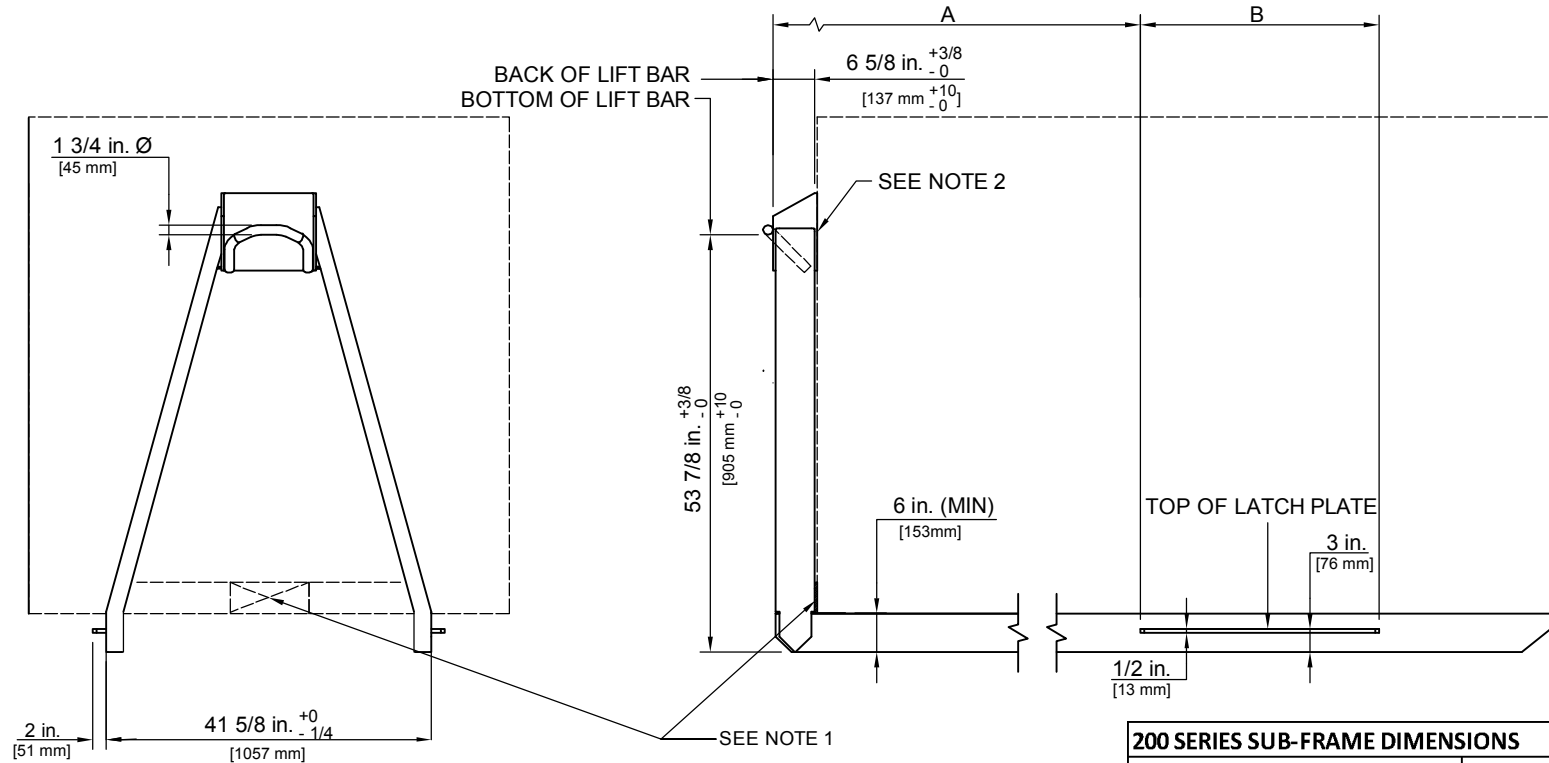


An EFCO Company

# SWAPLOADER®

"Hooked on Quality" U.S.A. LTD.

## 200 SERIES SUB-FRAME CRITICAL DIMENSIONS



### 200 SERIES SUB-FRAME DIMENSIONS

HOIST COMPATABILITY	A	B
SL-2418HD	84 1/8" [2137mm]	24" [610 mm]
SL-225	110 3/4" [2813mm]	36" [915 mm]
SL-180/185/240	111 3/4" [2839 mm]	48" [1220 mm]
SL-205	122 3/4" [3118 mm]	36" [915 mm]
SL-220/222	123 3/4" [3143 mm]	48" [1220 mm]

#### NOTES

- 1.) A STRUCTURAL JIB CONTACT POINT LOCATED AS LOW AS ALLOWABLE ON THE FRONT OF THE BODY IS REQUIRED.
- 2.) WELD HOOK GUARD TO BODY OR ADD STRUCTURAL SUPPORT AS NEEDED FOR THE APPLICATION.
- 3.) THIS DRAWING PROVIDES THE CRITICAL SUB-FRAME DIMENSIONS FOR COMPATABILITY WITH THE SWAPLOADER HOOK LIFT HOIST. IT IS THE SUB-FRAME SUPPLIERS RESPONSIBILITY TO PROVIDE A SUB-FRAME OF SUFFICIENT CAPACITY WHICH PROPERLY SUPPORTS THE BODY/CONTAINER WHEN USED WITH THE HOOK LIFT HOIST.

**SWAPLOADER™**  
U.S.A. LTD.

TITLE  
**200 SERIES SUB-FRAMES**

DRAWING NO. <b>S-934</b>	MODEL NO.	REV <b>A</b>
-----------------------------	-----------	-----------------